

PT1	BL
PT2	GR
PT3	YL
PT5	YL
PT10	YL

BP	YL
O2	YL
CH4	YL
TT1	YL
TT6	YL
TIC1	YL
TIC2	YL
H2O	BRN
	BLUE

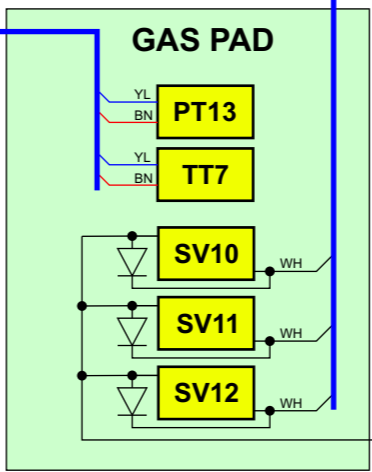
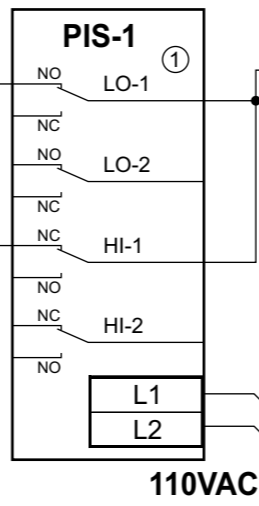
N	Address
1	Flow5V_gnd
2	Flow5V_out
5	GND_power
7	+12V (+24V)
8	Setpoint
9	Flow20mA_return
10	Setpoint_gnd
14	Flow20mA

N	Address
1	Flow5V_gnd
2	Flow5V_out
5	GND_power
7	+12V (+24V)
8	Setpoint
9	Flow20mA_return
10	Setpoint_gnd
14	Flow20mA

N	Address	N
1	PT1	1
2	PT2	2
3	PT3	3
4	PT5	4
5	PT6	5
6	PT7	6
7	PT8	7
8	PT9	8
9	PT10	9
10	PT11	10
11	PT12	11
12	PT13	12
13	BP	13
14	FM1	14
15	FM2	15
16	FT1	16
17	FT2	17
18	H2O	18
19	O2	19
20	CH4	20
21	TT1	21
22	TT2	22
23	TT3	23
24	TT4	24
25	TT5	25
26	TT6	26
27	TT7	27
28	TIC1	28
29	TIC2	29
30	TIC3	30
31	TIC4	31
32	RES32	32
33	FM-1sp	33
34	FM-2sp	34
35		35
36		36
37	+24V (PT)	37
38	+24V (PT)	38
39	+24V (PT)	39
40	+24V (PT)	40
41	GND (PT)	41
42	GND (PT)	42
43	GND (PT)	43
44	+15V	44
45	-15V	45
46	+5V	46
47	GND (PT)	47

N	Address	N
1	GND (SV)	1
2	GND (SV)	2
3	GND (SV)	3
9	GND_LOW	9
10	GND_HIGH	10

N	Address
1	+24V(SV)
2	SV1
3	+24V(SV)
4	SV2
5	+24V(SV)
6	SV3
7	+24V(SV)
8	SV4
9	+24V(SV)
10	SV5
11	+24V(SV)
12	SV6
13	+24V(SV)
14	SV7
15	+24V(SV)
16	SV8
17	+24V(SV)
18	SV9
19	+24V(SV)
20	SV10
21	+24V(SV)
22	SV11
23	+24V(SV)
24	SV12
25	+24V(SV)
26	COMP_S
27	+24V(SV)
28	COMP_B
29	+24V(SV)
30	SV-8a
31	+24V(SV)
32	Alarm



Alarm	
1	GND_SOUND
2	GND_BEACON
3	Alarm

12V Power 220VAC

DAQ32

POWER SUPPLIES

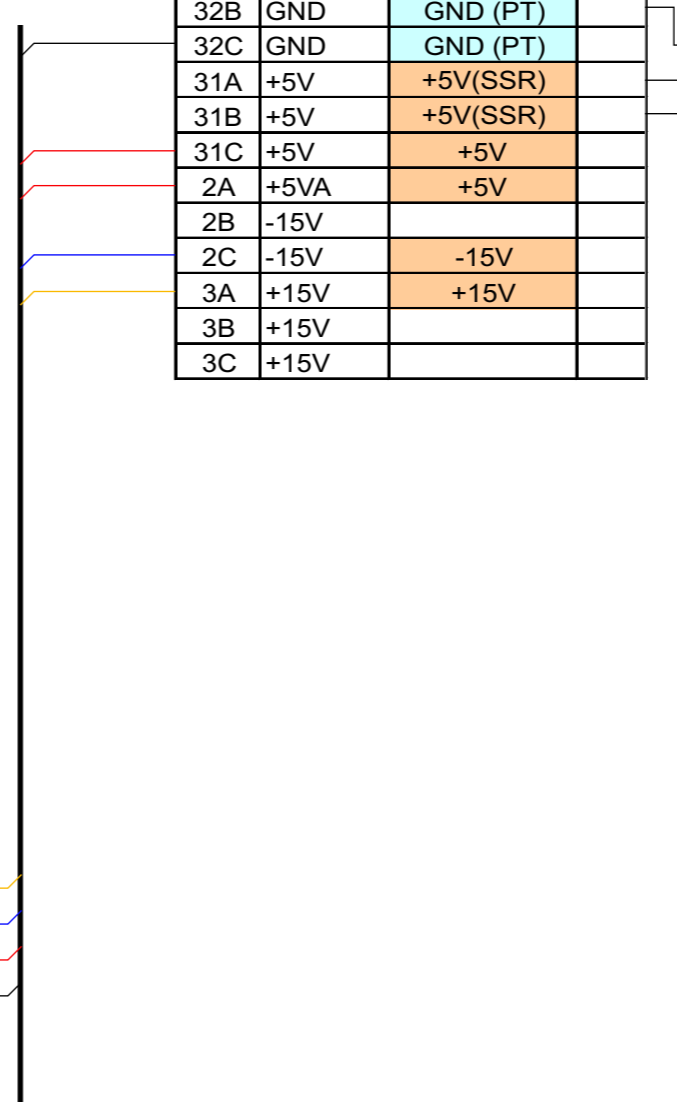
① NO and NC symbols denote PIS contacts marking Relay position corresponds to normal operating pressure

DAQ32_analog			
Pin	Type	Name	Ch
4B	AI	PT1	0
4C	AI	PT2	1
5B	AI	PT3	2
5C	AI	PT5	3
6B	AI	PT6	4
6C	AI	PT7	5
7B	AI	PT8	6
7C	AI	PT9	7
8B	AI	PT10	8
8C	AI	PT11	9
9B	AI	PT12	10
9C	AI	PT13	11
10B	AI	BP	12
10C	AI	FM1	13
11B	AI	FM2	14
11C	AI	FT1	15
12B	AI	FT2	16
12C	AI	H2O	17
13B	AI	O2	18
13C	AI	CH4	19
14B	AI	TT1	20
14C	AI	TT2	21
15B	AI	TT3	22
15C	AI	TT4	23
16B	AI	TT5	24
16C	AI	TT6	25
17B	AI	TT7	26
17C	AI	TIC1	27
18B	AI	TIC2	28
18C	AI	TIC3	29
19B	AI	TIC4	30
19C	AI	RES32	31
21B	DAC	FM-1sp	0
21C	DAC	FM-2sp	1
22B	DAC		2
22C	DAC		3
20B	GND	GND (PT)	
20C	GND		
1A	GND		
1B	GND	GND (PT)	
1C	GND		

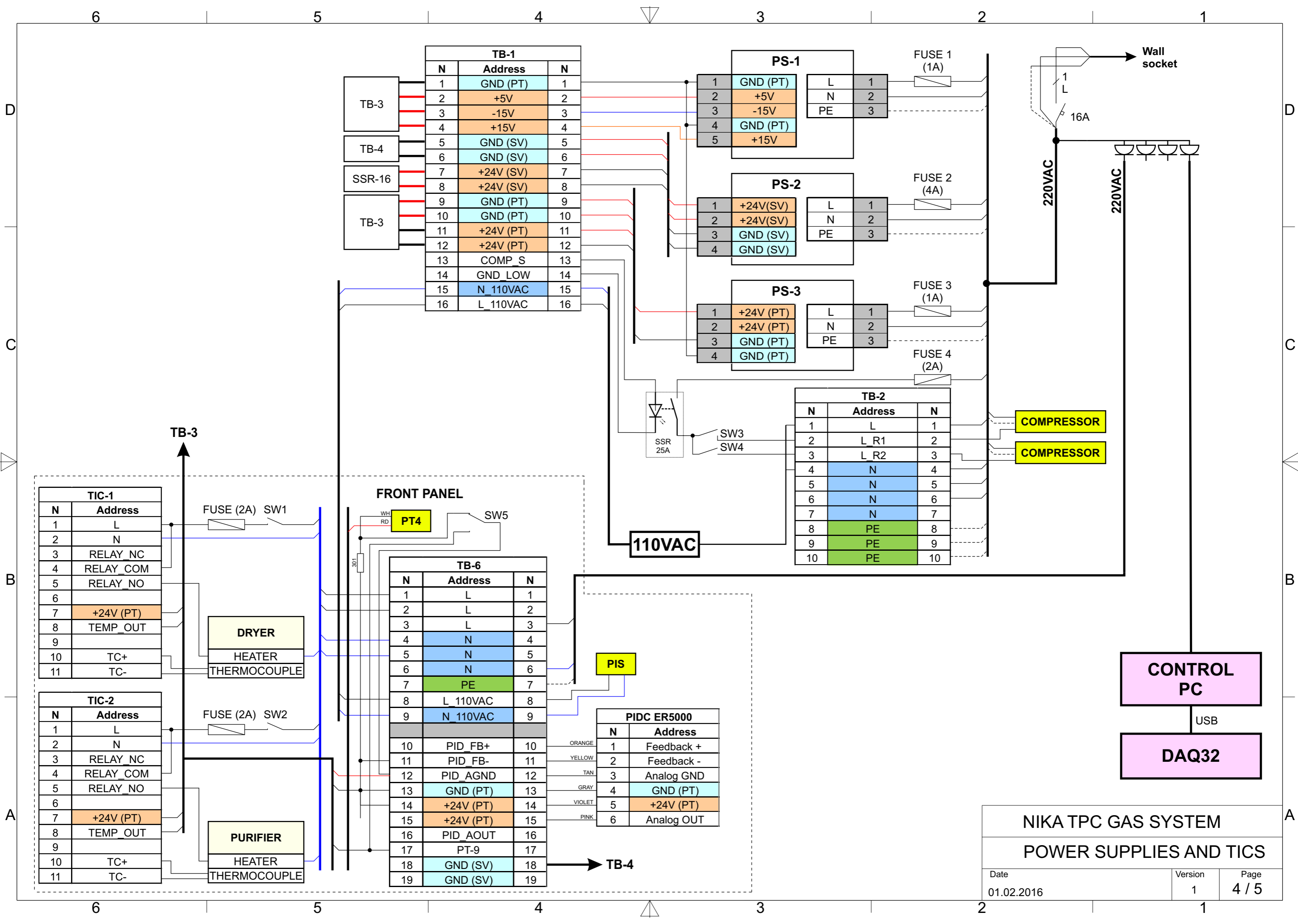
TB-3		
N	Address	N
1	PT1	1
2	PT2	2
3	PT3	3
4	PT5	4
5	PT6	5
6	PT7	6
7	PT8	7
8	PT9	8
9	PT10	9
10	PT11	10
11	PT12	11
12	PT13	12
13	BP	13
14	FM1	14
15	FM2	15
16	FT1	16
17	FT2	17
18	H2O	18
19	O2	19
20	CH4	20
21	TT1	21
22	TT2	22
23	TT3	23
24	TT4	24
25	TT5	25
26	TT6	26
27	TT7	27
28	TIC1	28
29	TIC2	29
30	TIC3	30
31	TIC4	31
32	RES32	32
33	FM-1sp	33
34	FM-2sp	34
35		35
36		36
37	+24V (PT)	37
38	+24V (PT)	38
39	+24V (PT)	39
40	+24V (PT)	40
41	GND (PT)	41
42	GND (PT)	42
43	GND (PT)	43
44	+15V	44
45	-15V	45
46	+5V	46
47	GND (PT)	47

DAQ32_digital			
Pin	Type	Name	Ch
23C	DO	SV1	0
24B	DO	SV2	1
24C	DO	SV3	2
25B	DO	SV4	3
25C	DO	SV5	4
27A	DO	SV6	5
28A	DO	SV7	6
29A	DO	SV8	7
26A	DO	SV9	8
25A	DO	SV10	9
24A	DO	SV11	10
23A	DO	SV12	11
22A	DO	COMP_S	12
21A	DO	COMP_B	13
20A	DO	SV-8a	14
19A	DO	Alarm	15
23B	GND		
32A	GND		
32B	GND	GND (PT)	
32C	GND	GND (PT)	
31A	+5V	+5V(SSR)	
31B	+5V	+5V(SSR)	
31C	+5V	+5V	
2A	+5VA	+5V	
2B	-15V		
2C	-15V	-15V	
3A	+15V	+15V	
3B	+15V		
3C	+15V		

SSR-16 (50-pin connector)		
Pin	Address	Ch
47	SV1	0
45	SV2	1
43	SV3	2
41	SV4	3
39	SV5	4
37	SV6	5
35	SV7	6
33	SV8	7
31	SV9	8
29	SV10	9
27	SV11	10
25	SV12	11
23	COMP_S	12
21	COMP_B	13
19	SV-8a	14
17	Alarm	15
1	+5V(SSR)	
49	+5V(SSR)	
2,4...50	GND (PT)	



Green color corresponds to current input channels 4-20mA with shunt resistor 301.2 Ohm, Yellow color corresponds to voltage input channels (0..+10VDC)



TB-1		
N	Address	N
1	GND (PT)	1
2	+5V	2
3	-15V	3
4	+15V	4
5	GND (SV)	5
6	GND (SV)	6
7	+24V (SV)	7
8	+24V (SV)	8
9	GND (PT)	9
10	GND (PT)	10
11	+24V (PT)	11
12	+24V (PT)	12
13	COMP_S	13
14	GND LOW	14
15	N_110VAC	15
16	L_110VAC	16

PS-1		
N	Address	N
1	GND (PT)	1
2	+5V	2
3	-15V	3
4	GND (PT)	4
5	+15V	5

PS-2		
N	Address	N
1	+24V (SV)	1
2	+24V (SV)	2
3	GND (SV)	3
4	GND (SV)	4

PS-3		
N	Address	N
1	+24V (PT)	1
2	+24V (PT)	2
3	GND (PT)	3
4	GND (PT)	4

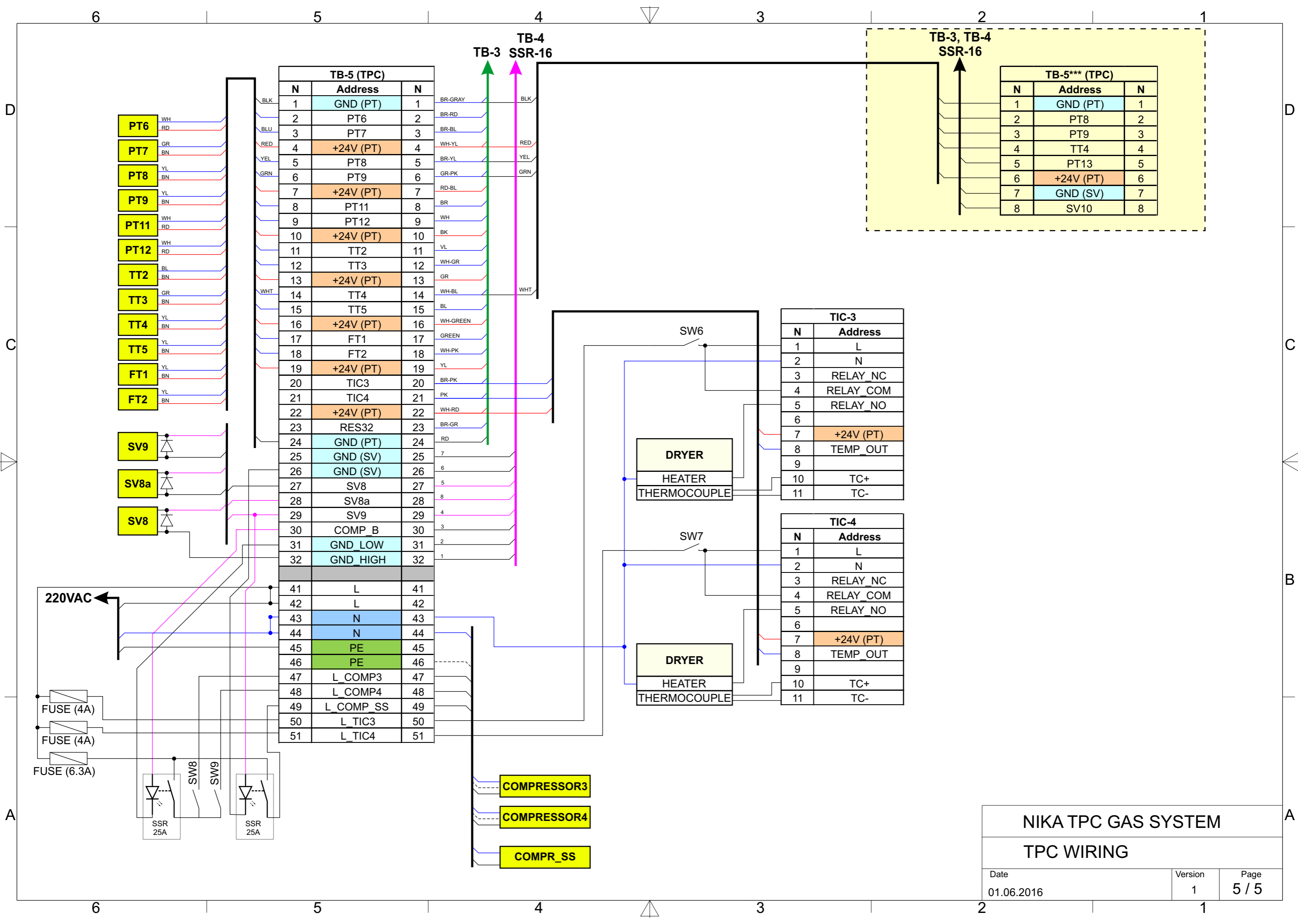
TB-2		
N	Address	N
1	L	1
2	L R1	2
3	L R2	3
4	N	4
5	N	5
6	N	6
7	N	7
8	PE	8
9	PE	9
10	PE	10

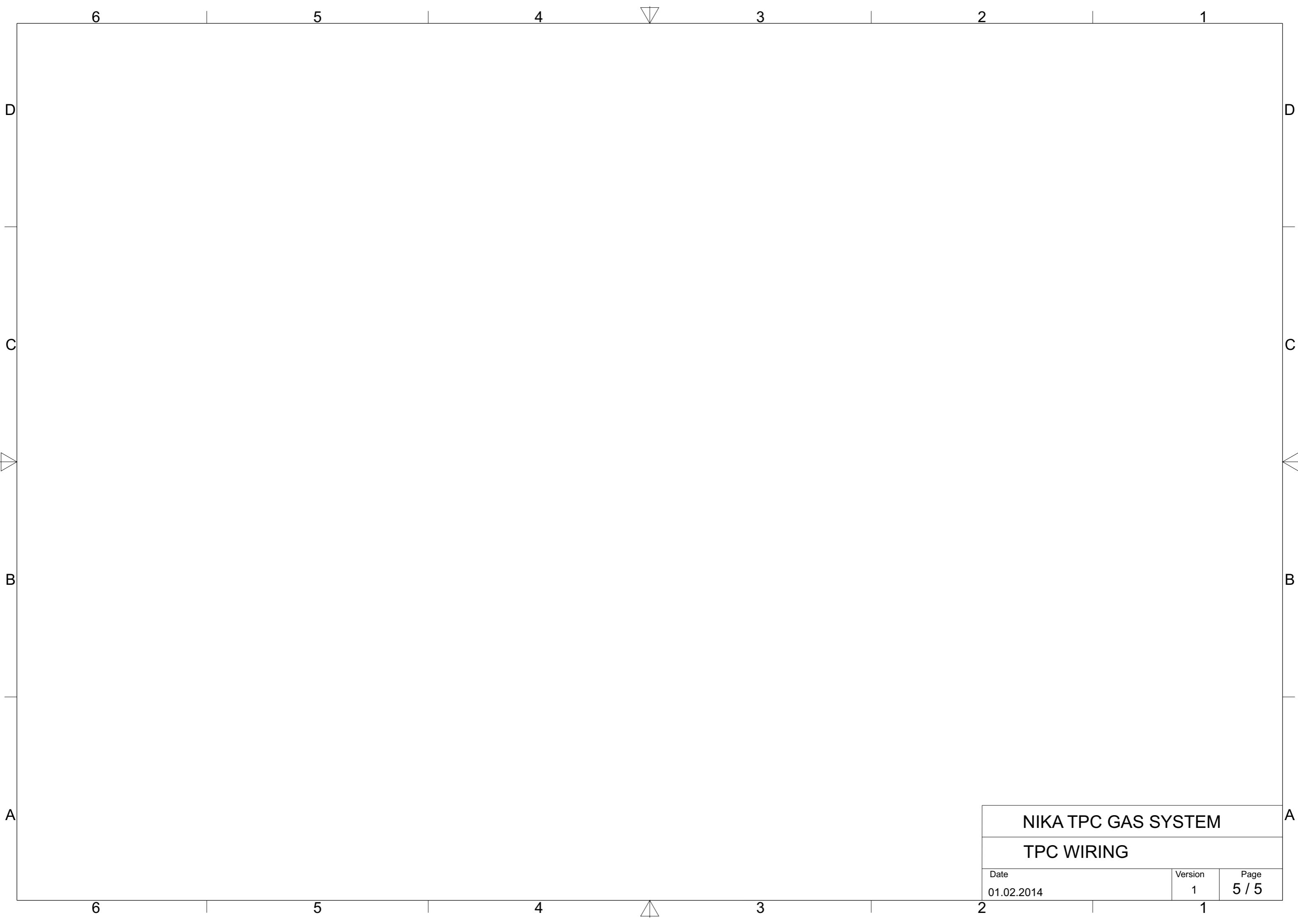
TB-6		
N	Address	N
1	L	1
2	L	2
3	L	3
4	N	4
5	N	5
6	N	6
7	PE	7
8	L 110VAC	8
9	N 110VAC	9
10	PID_FB+	10
11	PID_FB-	11
12	PID_AGND	12
13	GND (PT)	13
14	+24V (PT)	14
15	+24V (PT)	15
16	PID_AOUT	16
17	PT-9	17
18	GND (SV)	18
19	GND (SV)	19

PIDC ER5000		
N	Address	N
1	Feedback +	1
2	Feedback -	2
3	Analog GND	3
4	GND (PT)	4
5	+24V (PT)	5
6	Analog OUT	6

TIC-1		
N	Address	N
1	L	1
2	N	2
3	RELAY_NC	3
4	RELAY_COM	4
5	RELAY_NO	5
6		6
7	+24V (PT)	7
8	TEMP_OUT	8
9		9
10	TC+	10
11	TC-	11

TIC-2		
N	Address	N
1	L	1
2	N	2
3	RELAY_NC	3
4	RELAY_COM	4
5	RELAY_NO	5
6		6
7	+24V (PT)	7
8	TEMP_OUT	8
9		9
10	TC+	10
11	TC-	11





NIKA TPC GAS SYSTEM		
TPC WIRING		
Date	Version	Page
01.02.2014	1	5 / 5